

# MARINER SANDS COUNTRY CLUB

## A REPLAT OF A PORTION OF MARINER SANDS PLAT NO. 1

Being all of TRACT MF-2 AND all of TRACT RC-1 AND all of TRACT R/GA-1 of MARINER SANDS PLAT NO. 1 as recorded in Plat Book 6, Page 47, public records of Martin County, Florida.

I, Louise V. Isaacs, Clerk of the Circuit Court of Martin County, Florida, hereby certify that this plat was filed for record in Plat Book 8, Page 21, Martin County, Florida, public records, this day of \_\_\_\_\_, 1980.

LOUISE V. ISAACS, CLERK  
CIRCUIT COURT  
MARTIN COUNTY, FLORIDA

BY: \_\_\_\_\_  
Deputy Clerk

File No. \_\_\_\_\_

### TITLE CERTIFICATION

I, SHIRLEY L. YINGLING, Vice President and Manager of FLORIDA ABSTRACT AND TITLE INSURANCE COMPANY OF STUART, Florida, hereby certify that apparent record title to the land described in the dedication, as shown on this plat, is in the name of the person, persons, corporation, corporations, or other entity executing the dedication hereon.

All mortgages not satisfied or released of record encumbering the land described hereon are as follows: GREAT AMERICAN MANAGEMENT AND INVESTMENT, INC., the mortgagor and MARINER SANDS DEVELOPMENT CORP., the mortgagee; filed mortgage on:

July 5, 1978 in Official Record Book 448 at Page 233; and  
September 5, 1978 in Official Record Book 452 at Page 934  
of the Public Records of Martin County, Florida,

AND

FIRST AMERICAN BANK OF PALM BEACH COUNTY, the mortgagor and MARINER SANDS DEVELOPMENT CORP., the mortgagee; filed mortgage on:

September 6, 1978 in Official Record Book 452 at Page 737; and  
July 16, 1979 in Official Record Book 475 at Page 840  
of the Public Records of Martin County, Florida,

AND

FIRST AMERICAN BANK OF PALM BEACH COUNTY, the mortgagor and ENVIRONMENTAL VENTURES, INC., the mortgagee; filed mortgage on:

September 12, 1979 in Official Record Book 479 at Page 972  
of the Public Records of Martin County, Florida,

AND

MARINER SANDS DEVELOPMENT CORP., the mortgagor and ENVIRONMENTAL VENTURES, INC., the mortgagee; filed mortgage on:

September 12, 1979 in Official Record Book 479 at Page 794  
of the Public Records of Martin County, Florida.

FLORIDA ABSTRACT AND TITLE INSURANCE COMPANY OF STUART  
BY: Shirley L. Yingling  
Shirley L. Yingling, Vice President and Manager

### CERTIFICATE OF OWNERSHIP

MARINER SANDS DEVELOPMENT CORP., a Georgia corporation, and ENVIRONMENTAL VENTURES, INC., a Georgia corporation, by and through their respective undersigned officers, do hereby certify they are the owners of their respective properties as described in the dedication and shown hereon.

Dated this 13th day of MARCH, 1980.

ATTEST: Timothy C. Hockett  
Timothy C. Hockett, Assistant Secretary  
MARINER SANDS DEVELOPMENT CORP.

BY: Erling D. Speer  
Erling D. Speer, President

ATTEST: Timothy C. Hockett  
Timothy C. Hockett, Assistant Secretary  
ENVIRONMENTAL VENTURES, INC.

BY: Erling D. Speer  
Erling D. Speer, President

### APPROVAL OF COUNTY

This plat is hereby approved by the undersigned on the date or dates indicated.

MARCH 20, 1980  
29 MAR, 1980  
3/28, 1980  
March 28, 1980

E. J. [Signature]  
County Engineer

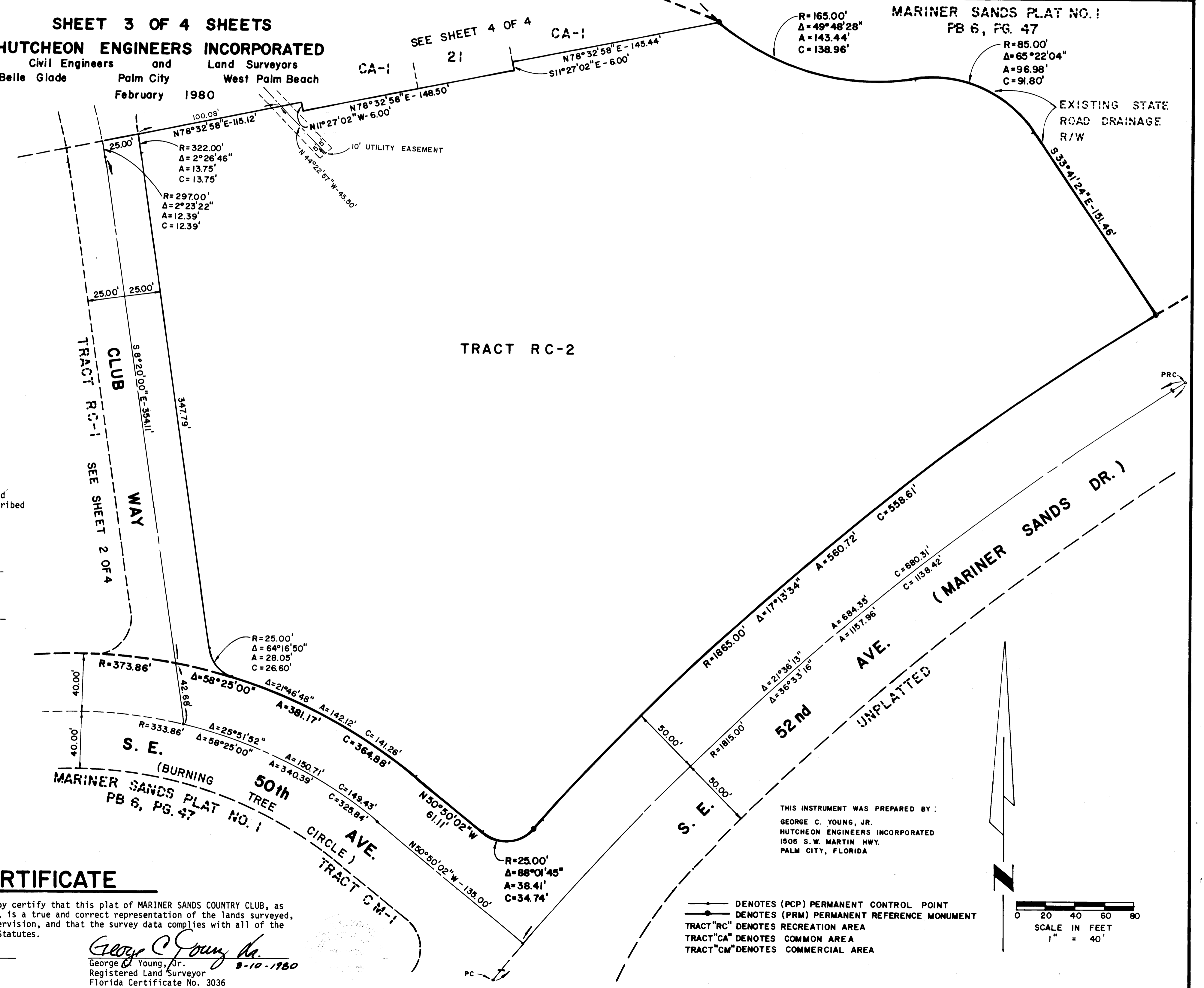
[Signature]  
County Attorney

PLANNING AND ZONING COMMISSION  
MARTIN COUNTY, FLORIDA  
BY: [Signature]  
Chairman

BOARD OF COUNTY COMMISSIONERS  
MARTIN COUNTY, FLORIDA  
BY: [Signature]  
Chairman

ATTEST: Louise V. Isaacs  
Clerk  
By Charlotte Burkley, OC

SHEET 3 OF 4 SHEETS  
HUTCHEON ENGINEERS INCORPORATED  
Civil Engineers and Land Surveyors  
Belle Glade Palm City West Palm Beach  
February 1980



### SURVEYOR'S CERTIFICATE

I, George C. Young, Jr., do hereby certify that this plat of MARINER SANDS COUNTRY CLUB, as shown on sheets 2 through 4 inclusive, is a true and correct representation of the lands surveyed, that the survey was made under my supervision, and that the survey data complies with all of the requirements of Chapter 177, Florida Statutes.

Date of Survey 3-7-1980

George C. Young, Jr.  
George C. Young, Jr.  
Registered Land Surveyor  
Florida Certificate No. 3036

THIS INSTRUMENT WAS PREPARED BY:  
GEORGE C. YOUNG, JR.  
HUTCHEON ENGINEERS INCORPORATED  
1505 S.W. MARTIN HWY.  
PALM CITY, FLORIDA

— DENOTES (PCP) PERMANENT CONTROL POINT  
— DENOTES (PRM) PERMANENT REFERENCE MONUMENT  
TRACT "RC" DENOTES RECREATION AREA  
TRACT "CA" DENOTES COMMON AREA  
TRACT "CM" DENOTES COMMERCIAL AREA

